



Product Catalog

Solar Mounting Solutions



ISO 9001: 2015 quality management system certified



Disclaimer :

We make every effort to ensure that all the information contained within our catalogue is complete and accurate. Due to continuous product optimization we reserve the right to make any changes or corrections to our products and this catalogue as well as individual product information at any time without prior notice. All previous catalogues and individual product information become invalid upon the release of the later publications.

Content

ABOUT US	03-04
Global Roofing	05-06
Global Service & Proven Records	07-12
Certificate	13-14
Rail & Accessories	15-20
Metal Roof Attachment	21-30
Tile Roof Attachment	31-36
Tilt Mounting	37-40
Ballasted-PRO Mounting	41-42
Ballasted-ULT Mounting	43-44
Ground Mounting	45-50
Carport Mounting	51-52
Waterproof Carport System	53-54

ABOUT US Enerack

Xiamen Enerack Technology Co., Ltd. located in Xiamen city. Specialize in research, design, development, production, and service of solar PV Mounting systems. We are committed to providing customers with stable, reliable and cost-effective solutions of roof mounting system, ground mounting system, and construction of various photovoltaic power stations for civil and commercial use, government departments, power stations projects etc.

Enerack company owns a factory with more than 80 skilled workers, having over 10 years solar products production experience. With a complete R& D processing and high manufacturing capacity, strictly following ISO9001 quality control system. Our products design strictly in accordance with Australia AS/NZS1170.2, JIS C 8955, MCS012, TUV, UL2703, European building codes and other standards. Ensure that every code and regulation is fully complied with all applicable local or national building codes.

Enerack offering innovative design and integrative settlement solution to our customers based on years of experiences on design, production and sale. We achieved good trust from customers because of our stable and excellent products. We will try our best to become a world leading level supplier of solar photovoltaic systems integration solutions .



Manufacturing facilities for both aluminum and steel products



Global service



Design standard: TUV, AS 1170.2:2011, JIS C 8955:2011, UL 1703/2703



Direct racking supply



Experienced team since 2010



15 Years warranty





Global Roofing

We have worked with roofing manufacturers and professional installers across the globe to develop, produce and deliver roof solar mounting solutions for a variety of roofs. Mounting solutions are available for popular and common roofing profiles manufactured from Africa, Europe, Middle East, Asia, America, Australia and New Zealand.

Latin America

Bluescope
Armco

Africa

Safintra
DURObuild
Classecon Roofing

AU/NZ

Lysaght
revolution roofing
Stramit
Apexsteel
McElroymetal
Fielders
Dimond Roofing
Foofing Industries Ltd
Metalcraft roofing
JCP roofing

European

Domico
Kingspan
Kalzip
Riverclack
Rukki
Versasteel
Phoenix Steels
Cladco Profiles Ltd
Accord Steel Cladding Ltd-C
German-Münker Metallprofile
Zambelli

North America

ASC Profiles
Butler Manufacturing
ATAS International
VP Buildings
Metal Depots
Metal Sales
McElroy-Metal
Fabral
Flatiron Steel
Vicwest
CBS Sheetmetal
Lakefront Roofing & Siding Supply
unioncorrugating
NCI Building Systems-
Bridger-Steel

Japan

Kyowa
Nihon Teppan
Sanko
Jfe-Nikkenban

South-east Asia

Lysaght
Tata steel
Good Steel
Kextra
GAF



Global Service & Proven Records

Enerack clamps and solar roof mount has been installed worldwide, from South Africa, Tanzania, Kenya of Africa, Netherlands, Hungary, Belgium, Sweden, Norway, Poland, Ukraine, Romania of Europe, Oman, Qatar, Dubai or Middle East, Sri Lanka, India, Indonesia, Malaysia, Thailand, Philippines, Singapore, Japan, Korea, China of Asia, Australia and New Zealand, to Canada, USA, Mexico, Panama, Costa Rica, Guatemala, Honduras, Colombia, Argentina, Brazil, Uruguay or America.

manufactured for Africa, Europe, Middle East, Asia, America, Australia and New Zealand.





East & West Ballasted PRO-Romania



Pole Mount-Australia



Carport Mount-France



Ballasted Mounting-Bulgaria



Ground Mount-Thailand



Ground Mount-Romania



Carport Mount-Hungary



Tile Roof Mount-Slovenia



Metal Roof Mount-Hungary



Metal Roof Mount-Malaysia



Ballasted PRO-Latvia



Tile Roof Mount-Hungary

Certificate

12 December 2018
Project number: U117_FP1
Xiamen Enerack Technology Co. Ltd.
203A, Norinco business plaza, N0.6, Huli Avenue,
Huli District, Xiamen, Fujian China, 361006.


Dear Sir,

RE: ENERACK SOLAR ROOF MOUNTING FOR PORTRAIT ORIENTATED FLUSH MOUNTED SOLAR PANELS

As Requested, we have reviewed the structural adequacy of the Aluminum support framing components as detailed in the drawings issued by Xiamen Enerack Technology Co. Ltd. We have design investigated for the Aluminum Railing as shown below. The section of the railing is shown below.

The panels are supported by two rows of railing. The railings are fixed directly to the rafters or to the purlins.

The spacing of the fixing of the Railing to the rafter/purlin shall be limited as tabulated below in tables 1.1, 1.2, 2.1, 2.2. Refer to "List of Tables" below to choose the appropriate span table. Refer to Figure A for wind regions and terrain categories as defined in AS1170.2. The Central & Edge zones referred to in the tables are depicted in figures B on the following pages.



Railing: ENERACK 52x29.55(mm)

Panel Portrait Mode

Two Rows of ENERACK Co. Ltd Railing

SPAD Pty Ltd ABN 47 090 039 571
Consulting Structural & Civil Engineers
114 Pyrmont Bridge Road, Annandale,
NSW 2038 AUSTRALIA

tel: +61 (0) 9565-5058
fax: +61 (0) 9565-5059
info@spadengineer.com.au
www.spadengineer.com.au

Director: Puheer C. Puheerathan
BEng, MEng, FEAust, OFEng
NREB (Civil & Structural)

11 December 2018
Project number: U117_AP1
Xiamen Enerack Technology Co. Ltd.
203A, Norinco business plaza, N0.6, Huli Avenue,
Huli District, Xiamen, Fujian China, 361006.

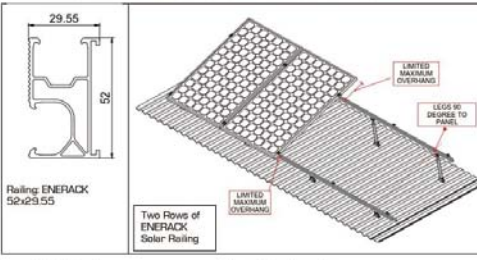
Dear Sir,

RE: ENERACK SOLAR ROOF MOUNTING FOR PORTRAIT ORIENTATED TILT MOUNTED SOLAR PANELS

As requested, we have reviewed the structural adequacy of the Aluminum support framing components as detailed in the drawings issued by Xiamen Enerack Technology Co. Ltd. We have design investigated for the Aluminum Railing as shown below. The section of the railing is shown below.

The panels in portrait orientation are supported by two rows of railing. The railings are supported by the legs which are fixed directly to the rafters, purlins or concrete roof.

The spacing of the back legs shall be limited as tabulated below in tables 1.1 & 1.2 for 1700 long panels and 2.1 & 2.2 for 2100 panels. Refer to Figure C on page 2 for wind regions and terrain categories as defined in AS1170.2. The spacing for the lower rail fixing can be increased by a third of the shorter legs. (Example: Spacing of longer leg=450. Spacing of lower railing=600)



Railing: ENERACK 52x29.55

Two Rows of ENERACK Solar Railing

Figure A Rail Detail

Figure B Configuration.

Note: Tilt angle is measured from the surface of the roof to the PV panel.

SPAD Pty Ltd ABN 47 090 039 571
Consulting Structural & Civil Engineers
114 Pyrmont Bridge Road, Annandale,
NSW 2038 AUSTRALIA

tel: +61 (0) 9565-5058
fax: +61 (0) 9565-5059
info@spadengineer.com.au
www.spadengineer.com.au

Director: Puheer C. Puheerathan
BEng, MEng, FEAust, OFEng
NREB (Civil & Structural)

CERTIFICATE
No. Z2 107999 0001 Rev. 00

Holder of Certificate: **Xiamen Enerack Technology Co., Ltd.**
203A, No.6 Huli Avenue
Huli District
361006 Xiamen
PEOPLE'S REPUBLIC OF CHINA

Production Facility(ies): 108023

Certification Mark: 

Product: **Photovoltaic (PV) Mounting System**

Model(s): **Tile roof mounting system**

Parameters: Construction site: Germany, the site altitude above sea level is less than 285m.
Snow conditions: Snow district: Zone 2
Wind zone: Wind zone 2
Max height of building: 18m
Angle of system: 30°

Tested according to: PPP 59029A.2013

The product was tested on a voluntary basis and complies with the essential requirements. The certification mark shown above can be affixed on the product. It is not permitted to alter the certification mark in any way. In addition the certification holder must not transfer the certificate to third parties. This certificate is valid until the listed date, unless it is cancelled earlier. All applicable requirements of the testing and certification regulations of TÜV SÜD Group have to be complied. For details see: www.tuvsud.comps-cert

Test report no.: 703002003501-00

Valid until: 2025-05-24

Date, 2020-05-25

(Neko (Yubin) Ding)

Page 1 of 1
TÜV SÜD Product Service GmbH • Certification Body • Riederstraße 65 • 80339 Munich • Germany

Form GAT_10-MDS, version 00, effective since March 25th, 2020

Certificate of Compliance

No. OP200915.XETCN79
Technical Construction File no. MD-TCF-200910-26806

Certificate's Holder: Xiamen Enerack Technology Co., Ltd.
203A, No.6 Huli Avenue, Huli District, Xiamen, China

Certification ECM Mark: 

Product: **Enerack Mini Rail Solar Mounting**

Model(s): **ERK-TR8-D10**

Verification to: Standard: EN ISO 12100:2010
related to CE Directive(s): 2006/42/EC (Machinery)

Remark: This document has been issued on a voluntary basis and upon request of the manufacturer. It is our opinion that the technical documentation received from the manufacturer is satisfactory for the requirements of the ECM Certification Mark. The conformity mark above can be affixed on the products according to the ECM regulation about its release and its use.

Additional information and clarification about the Marking:
The manufacturer is responsible for the CE Marking process, and if necessary, must refer to a Notified Body. This document has been issued on the basis of the regulation on ECM Voluntary Mark for the certification of products, RG01_ECM rev.3 available at: www.entecema.it

Issuance date: 15 September 2020
Expiry date: 14 September 2025

Reviewer: Technical expert Amanda Payne
Approver: ECM Service Director Luca Bagnoli

Ente Certificazione Macchine Srl
Via Ca' Bella, 243 - Loc. Castello di Serravalle - 40053 Valdamoglia (BO) - ITALY
☎ +39 051 6705141 ☎ +39 051 6705156 ✉ info@entecema.it www.entecema.it

Form GAT_10-MD4, version 00, effective since March 25th, 2020

Certificate of Compliance

No. OP211227.XETSU14
Test Report / Technical Construction File no. MD-TCF-2021122435583

Certificate's Holder: Xiamen Enerack Technology Co., Ltd.
203A, No.6 Huli Avenue, Huli District, Xiamen, China

Certification ECM Mark: 

Product: **Enerack Carport Mounting System**

Model(s): **ERK-WPC**

Verification to: Standard: EN 1090-1:2009+A1:2011
related to Regulation (EU): R 305/2011 (Regulation for the Marketing of Construction Products)

Remark: This document has been issued on a voluntary basis and upon request of the manufacturer. It is our opinion that the technical documentation received from the manufacturer is satisfactory for the requirements of the ECM Certification Mark. The conformity mark above can be affixed on the products according to the ECM regulation about its release and its use.

Additional information and clarification about the Marking:
The manufacturer is responsible for the CE Marking process, and if necessary, must refer to a Notified Body. This document has been issued on the basis of the regulation on ECM Voluntary Mark for the certification of products, RG01_ECM rev.3 available at: www.entecema.it

Issuance date: 27 December 2021
Expiry date: 24 December 2026

Reviewer: Technical expert Amanda Payne
Approver: ECM Service Director Luca Bagnoli

Ente Certificazione Macchine Srl
Via Ca' Bella, 243 - Loc. Castello di Serravalle - 40053 Valdamoglia (BO) - ITALY
☎ +39 051 6705141 ☎ +39 051 6705156 ✉ info@entecema.it www.entecema.it

Form GAT_10-MDS, version 00, effective since March 25th, 2020

Certificate of Compliance

No. OP200915.XETCN78
Technical Construction File no. MD-TCF-200910-26805

Certificate's Holder: Xiamen Enerack Technology Co., Ltd.
203A, No.6 Huli Avenue, Huli District, Xiamen, China

Certification ECM Mark: 

Product: **Enerack Ballasted Solar Mounting System**

Model(s): **ERK-BSF-15, ERK-BSR-15**

Verification to: Standard: EN ISO 12100:2010
related to CE Directive(s): 2006/42/EC (Machinery)

Remark: This document has been issued on a voluntary basis and upon request of the manufacturer. It is our opinion that the technical documentation received from the manufacturer is satisfactory for the requirements of the ECM Certification Mark. The conformity mark above can be affixed on the products according to the ECM regulation about its release and its use.

Additional information and clarification about the Marking:
The manufacturer is responsible for the CE Marking process, and if necessary, must refer to a Notified Body. This document has been issued on the basis of the regulation on ECM Voluntary Mark for the certification of products, RG01_ECM rev.3 available at: www.entecema.it

Issuance date: 15 September 2020
Expiry date: 14 September 2025

Reviewer: Technical expert Amanda Payne
Approver: ECM Service Director Luca Bagnoli

Ente Certificazione Macchine Srl
Via Ca' Bella, 243 - Loc. Castello di Serravalle - 40053 Valdamoglia (BO) - ITALY
☎ +39 051 6705141 ☎ +39 051 6705156 ✉ info@entecema.it www.entecema.it

Form GAT_10-MDS, version 00, effective since March 25th, 2020

Certificate of Compliance

No. OP201015.XETST48
Technical Construction File no. MD-TCF-201014-27256

Certificate's Holder: Xiamen Enerack Technology Co., Ltd.
203A, No.6 Huli Avenue, Huli District, Xiamen, China

Certification ECM Mark: 

Product: **Enerack Ground Mounting System**

Model(s): **ERK-GMS**

Verification to: Standard: EN ISO 12100:2010
related to CE Directive(s): 2006/42/EC (Machinery)

Remark: This document has been issued on a voluntary basis and upon request of the manufacturer. It is our opinion that the technical documentation received from the manufacturer is satisfactory for the requirements of the ECM Certification Mark. The conformity mark above can be affixed on the products according to the ECM regulation about its release and its use.

Additional information and clarification about the Marking:
The manufacturer is responsible for the CE Marking process, and if necessary, must refer to a Notified Body. This document has been issued on the basis of the regulation on ECM Voluntary Mark for the certification of products, RG01_ECM rev.3 available at: www.entecema.it

Issuance date: 15 October 2020
Expiry date: 14 October 2025

Reviewer: Technical expert Amanda Payne
Approver: ECM Service Director Luca Bagnoli

Ente Certificazione Macchine Srl
Via Ca' Bella, 243 - Loc. Castello di Serravalle - 40053 Valdamoglia (BO) - ITALY
☎ +39 051 6705141 ☎ +39 051 6705156 ✉ info@entecema.it www.entecema.it

Zhongjian Certification Co., Ltd.

CERTIFICATE OF CONFORMITY OF QUALITY MANAGEMENT SYSTEM CERTIFICATION

No.0970021Q51019R05

This is to certify that the quality system of **XIAMEN ENERACK TECHNOLOGY CO., LTD.**
UNIT 203A, NORINCO BUSINESS PLAZA, NO.6 HULI AVENUE, XIAMEN AREA, CHINA (FUJIAN PILOT FREE TRADE ZONE)
Organization Code: 91350208MA328Y483

is in conformity with **GB/T 19001-2016/ISO9001:2015 Standard**

This system is valid for the **SOLAR MOUNTING SYSTEMS AND ACCESSORIES**

Term of validity of the certificate from 2021-03-29 to 2024-03-28 inclusive
This certificate remains valid only if the certified organization accepts and passes regular surveillance audits.

Date of issue: 2021-03-29

Representative of The Company: 

IAF CNAS MANAGEMENT SYSTEM CERTIFICATION

Rail & Accessories



According to different markets, different customer requirements, as well as the project budget, we design and produce various types of rails and accessories to meet the customer's projects need. Each product is subjected to rigorous strength calculation, SGS testing, TUV, CE, and AS/NZS1170.2 certifications.



Item No. ERK-R52
Description Enerack 52mm Rail



5

Item No. ERK-R52L
Description Enerack 52mm L Rail



6

Item No. ERK-R62
Description Enerack 62mm Rail



7

Item No. ERK-R62C
Description Enerack 62mm C Rail



8

1
Item No. ERK-SFR-01
Description Splice for Rail Kit 01



2
Item No. ERK-SFR-02
Description Splice for Rail Kit 02



Item No. ERK-R60
Description Enerack 60mm Rail



9

Item No. ERK-R70
Description Enerack 70mm Rail

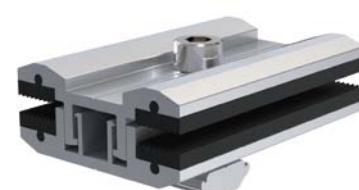


10

3
Item No. ERK-TEC
Description Thin Film Double-glazed Module End Clamp Kit



4
Item No. ERK-TIC
Description Thin Film Double-glazed Module Inner Clamp Kit



Item No. ERK-R42
Description Enerack 42mm Rail



11

Item No. ERK-R41
Description Enerack 41mm Rail (T-Bolt)



12

Rail & Accessories

13
 Item No. | ERK-R41-2
 Description | Enerack 41mm Rail for Ballasted Mounting



14
 Item No. | ERK-R46
 Description | Enerack 46mm Rail



21
 Item No. | ERK-EIC
 Description | Universal Adjustable (30-40mm) Inner Clamp Kit (Include Spring & Earthing Clip)



22
 Item No. | ERK-FEC
 Description | General End Clamp Kit



15
 Item No. | ERK-R29
 Description | Enerack 29mm Rail



16
 Item No. | ERK-R26
 Description | Enerack 26mm Rail



23
 Item No. | ERK-RCN
 Description | Standard Rail Clamp with ERK Nuts Kita



24
 Item No. | ERK-RCB
 Description | Standard Rail Clamp with T-Bolt Kit



17
 Item No. | ERK-R65
 Description | Enerack 65mm Rail



18
 Item No. | ERK-REC
 Description | ERK-R52 Rail & ERK-R52L Rail End Cover Cap



25
 Item No. | ERK-FEC-3035
 Description | 30 & 35mm Exchange End Clamp Kit



26
 Item No. | ERK-RCC
 Description | Standard Rail Clamp with the Carriage Bolt



19
 Item No. | ERK-AEC
 Description | Universal Adjustable (30-35mm) End Clamp Kit



20
 Item No. | ERK-AIC
 Description | Universal Adjustable (30-40mm) Inner Clamp Kit



27
 Item No. | ERK-ELG-01
 Description | Earthing Lug Kit



28
 Item No. | ERK-ELG-02
 Description | Earthing Lug Kit 02



Rail & Accessories



29
Item No. ERK-ELG-03
Description Earthing Lug Kit 03



30
Item No. ERK-NUT
Description ERK Nuts



Item No. ERK-CCP-03
Description Cable Clip for PV Panels for Holding 3 Cables



37
Item No. ERK-CCP-04
Description Cable Clip for PV Panels for Holding 2 Cables



31
Item No. ERK-NBW
Description ERK Nuts Assembly with Bolt and Washer Kit



32
Item No. ERK-TBK
Description T-Bolt Kit



Item No. ERK-CCP-05
Description Cable Clip for PV Panels for Holding 4 Cables



39
Item No. ERK-CCP-06
Description Cable Clip for PV Panels for Holding 3 Cables



33
Item No. ERK-REL-A
Description Standard Rail Earthing Plate Type A



34
Item No. ERK-REL-B
Description Standard Rail Earthing Plate Type B



Item No. ERK-CCP-07
Description 90° Cable Clip for PV Panels for Holding 2 Cables



41

35
Item No. ERK-CCP-01
Description Cable Clip for PV Panels for Holding 3 Cables



36
Item No. ERK-CCP-02
Description Cable Clip for PV Panels for Holding 2 Cables



Metal Roof Attachment



Enerack Tin roof systems divided into two fixing methods:

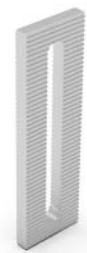
1. Drilling solutions, like bracket L-feet, hanger bolt, T type hook etc.
2. Standing seam clamp, direct mounting, no damage to the roof.

A design that includes major specifications saves you inventory cost, quick and easy to install. Innovative design of rail connect base-support can effectively increase the product strength, ensure the safety of the product use. Enerack have a large variety of tin roof brackets for customers' choice Customization allowed according to customers' need to meet special installation requirements.

Technical features:

Product name	Metal roof mounting system
Application	Metal roof
Inclination	Parallel to the roof
Material	AL 6005-T5, SUS 304, EPDM
Finish	AL 6005-T5 Anodized, SUS 304 Shot blasting
Module orientation	Landscape or Portrait

1
Item No. ERK-TRB-D27
Description Height adjust plate for L feet



2
Item No. ERK-TRB-D22
Description L Feet for Trapezoidal Sheet Metal



3
Item No. ERK-TRB-D05
Description Hanger Bolt for Corrugated Fibre Cement, Corrugated or Trapezoidal Sheet Metal (M10×180, M10×200, M10×250, M10×300)



4
Item No. ERK-TRB-D09
Description Asphalt Shingles Interface



5
Item No. ERK-TRB-D01
Description L Feet for Corrugated or Trapezoidal Sheet Metal



6
Item No. ERK-TRB-D25
Description Offset Hole L Feet for Corrugated or Trapezoidal Sheet Metal



7
Item No. ERK-TRB-D03
Description Hanger Bolt L Feet for Corrugated Fibre Cement, Corrugated or Trapezoidal Sheet Metal (M10×180, M10×200, M10×250, M10×300)



8
Item No. ERK-TRB-D26
Description Hanger Bolt Offset Hole L Feet for Corrugated Fibre Cement, Corrugated or Trapezoidal Sheet Metal (M10×180, M10×200, M10×250, M10×300)



9
Item No. ERK-TRB-D08
Description 8# Tin Roof Hook for Trapezoidal Sheet Metal



10
Item No. ERK-TRB-D07
Description 7# Tin Roof Hook for Trapezoidal Sheet Metal



11
Item No. ERK-TRB-D06
Description 6# Tin Roof Hook for Trapezoidal Sheet Metal



12
Item No. ERK-TRB-D21
Description 21# Tin Roof Hook for Trapezoidal Sheet Metal



Metal Roof Attachment



13
 Item No. ERK-TRB-D28
 Description 70mm Mini Rail for Corrugated or Trapezoidal Sheet Metal



14
 Item No. ERK-TRB-D20
 Description 65mm Mini Rail for Corrugated or Trapezoidal Sheet Metal



Item No. ERK-TRB-C02
 Description Klip Lok 406 & 700 Interface



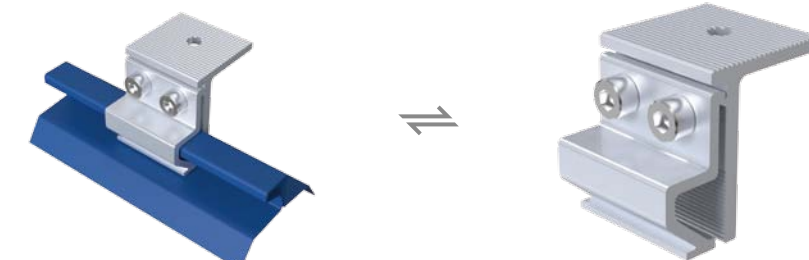
15
 Item No. ERK-TRB-D13
 Description 60mm Mini Rail for Corrugated or Trapezoidal Sheet Metal



16
 Item No. ERK-TRB-D10
 Description 26mm Mini Rail for Corrugated or Trapezoidal Sheet Metal



Item No. ERK-TRB-C04
 Description Standing Seam Clamp



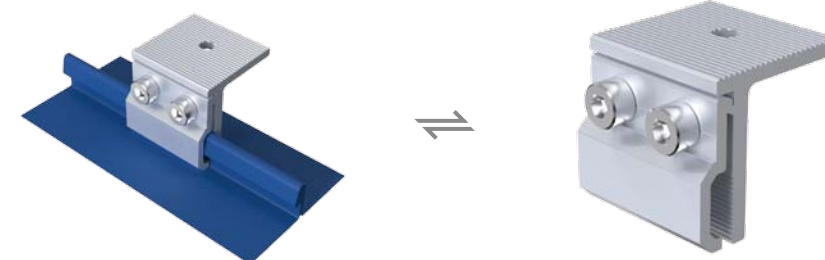
17
 Item No. ERK-TRB-D11
 Description 29mm U Type Rail for Corrugated or Trapezoidal Sheet Metal



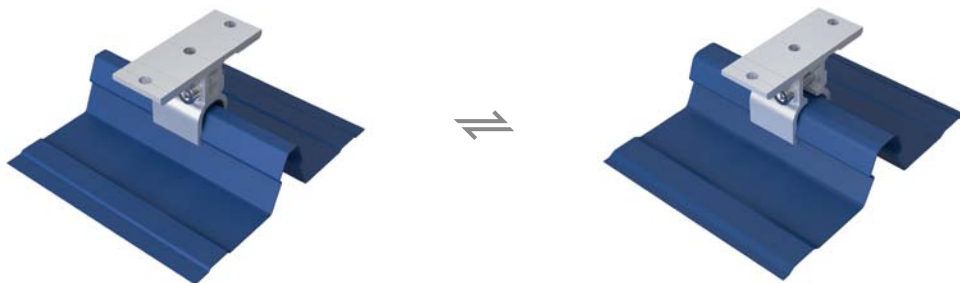
18
 Item No. ERK-TRB-D14
 Description 46mm Mini Rail for Corrugated or Trapezoidal Sheet Metal



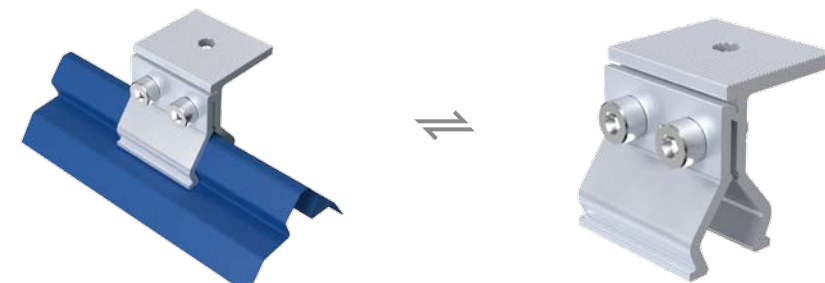
Item No. ERK-TRB-C05
 Description Standing Seam Clamp



19
 Item No. ERK-TRB-C01
 Description Klip Lok 406 & 700 Interface



Item No. ERK-TRB-C06
 Description Standing Seam Clamp



Metal Roof Attachment



24

Item No. ERK-TRB-C14
Description Metdek 855 Dimondek 630 Interface



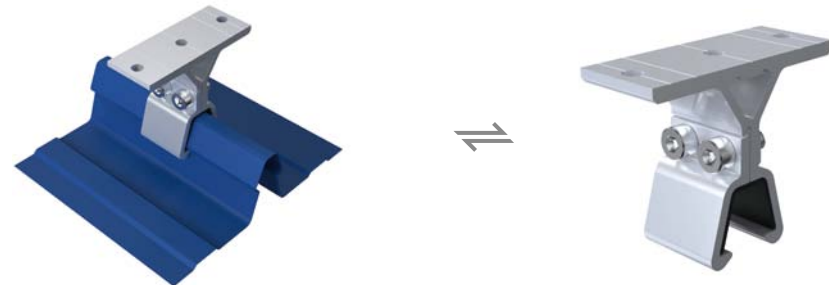
Item No. ERK-TRB-C21
Description Standing Seam Clamp

28



25

Item No. ERK-TRB-C15
Description Metdek 500 Interface



Item No. ERK-TRB-C22
Description Standing Seam Clamp

29



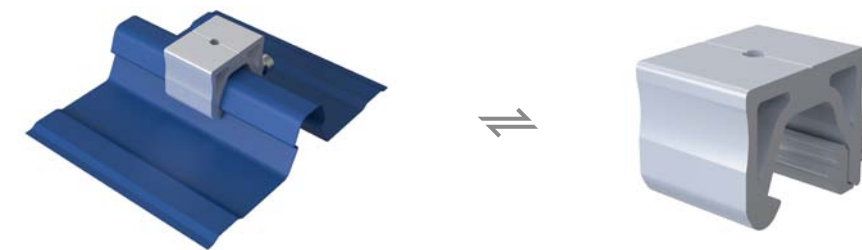
26

Item No. ERK-TRB-C16
Description RiverClack Roofing Profile



Item No. ERK-TRB-C23
Description Klip Lok 700 Interface

30



27

Item No. ERK-TRB-C20
Description Lysaght Klip-lok 406 Interface



Item No. ERK-TRB-C24
Description Standing Seam Clamp

31

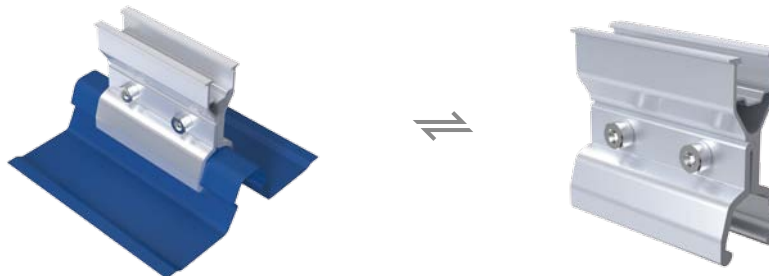


Metal Roof Attachment

32
 Item No. ERK-TRB-C25
 Description Klip Lok 700 Interface



Item No. ERK-TRB-C38
 Description Lysaght Klip-lok 700 Interface



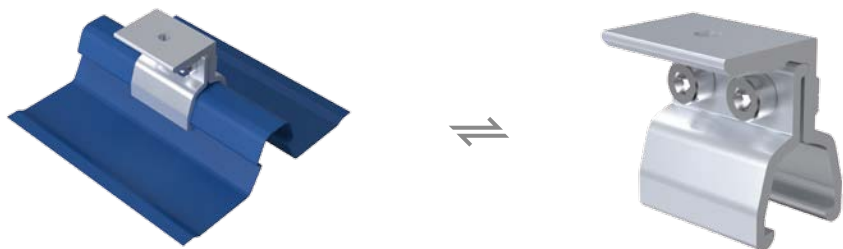
33
 Item No. ERK-TRB-C26
 Description WeatherClip II 700 Interface



Item No. ERK-TRB-C13
 Description Lysaght Klip-lok Interface



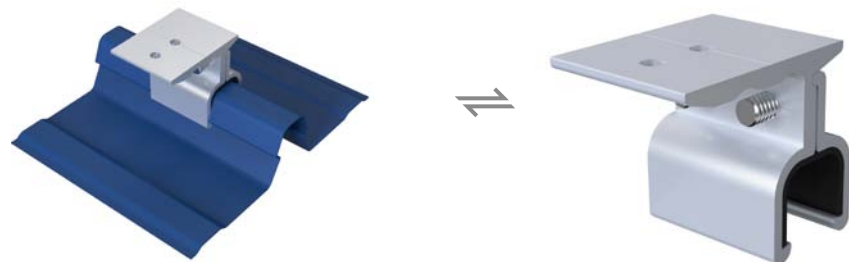
34
 Item No. ERK-TRB-C39
 Description Lysaght Klip-lok 700 Interface



Item No. ERK-TRB-C29
 Description Lysaght Klip-lok 406 Interface



35
 Item No. ERK-TRB-C27
 Description Klip Lok 700 Interface



Item No. ERK-TRB-C30
 Description WeatherClip II 700 Interface

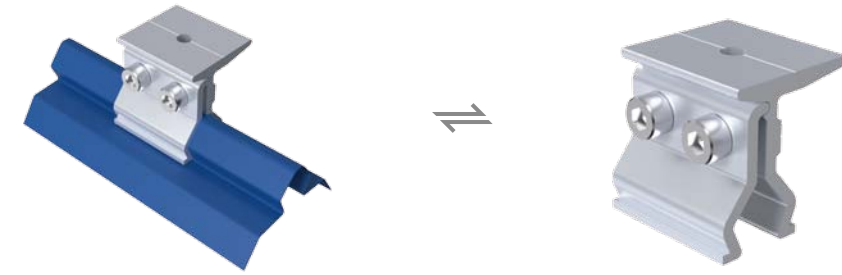


Metal Roof Attachment

40
Item No. ERK-TRB-C31
Description Clip Lock Interface



Item No. ERK-TRB-C35
Description Standing Seam Clamp



44

41
Item No. ERK-TRB-C32
Description Valio Metal Sheet Roof Interface



Item No. ERK-TRB-C36
Description Standing Seam Clamp

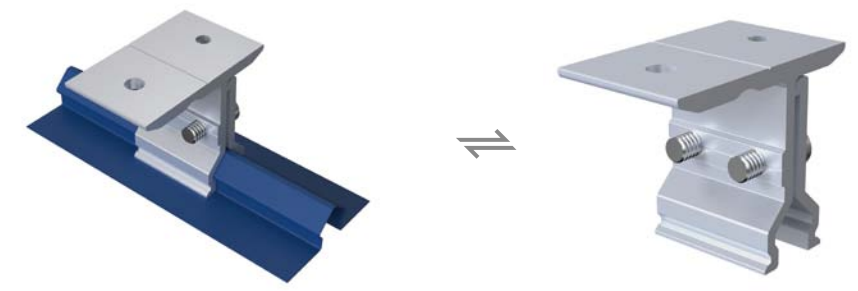


45

42
Item No. ERK-TRB-C33
Description Standing Seam Clamp

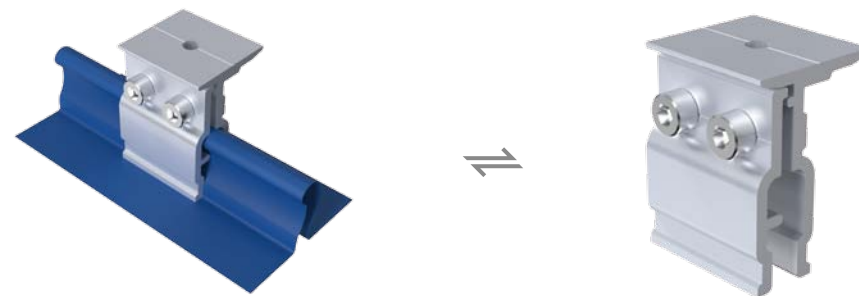


Item No. ERK-TRB-C28
Description Valio Metal Sheet Roof Interface



46

43
Item No. ERK-TRB-C34
Description Standing Seam Clamp



Item No. ERK-TRB-C10
Description Stainless Steel Tin Interface Bracket



47

Tile Roof Attachment

Enerack has many types of tile roof hooks, suitable for most roof types of tile, flat tile, slate tile, asphalt shingle tile.

A design that includes major specifications saves you inventory cost, quick and easy to install. Innovative design of rail connect base-support can effectively increase the product strength, ensure the safety of the product use.

Enerack has a large variety of roof hooks provide customers options.

Customization allowed according to customers' need to meet special installation requirements.

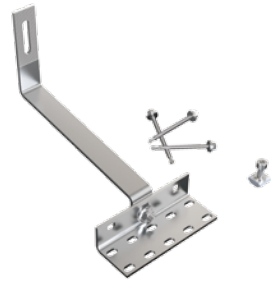
Technical features:

Product name	Tile roof mounting system
Application	Tile roof, Flat tile roof, Slate roof
Inclination	Parallel to the roof
Material	AL 6005-T5, SUS 304
Finish	AL 6005-T5 Anodized, SUS 304 Shot blasting
Module orientation	Landscape or Portrait

1 Item No. ERK-TRH-T17
Description Tile Roof Hook



2 Item No. ERK-TRH-T18
Description Tile Roof Hook



3 Item No. ERK-TRH-T20(t=6mm)
Description Tile Roof Hook



4 Item No. ERK-TRH-T22
Description Tile Roof Hook



5 Item No. ERK-TRH-T02
Description Tile Roof Hook



6 Item No. ERK-TRH-T01
Description Tile Roof Hook



7 Item No. ERK-TRH-T04
Description Tile Roof Hook for Holding 3 Cables



8 Item No. ERK-TRH-T03
Description Tile Roof Hook



9 Item No. ERK-TRH-T06
Description Tile Roof Hook



10 Item No. ERK-TRH-T05
Description Tile Roof Hook



11 Item No. ERK-TRH-T08
Description Tile Roof Hook



12 Item No. ERK-TRH-T07
Description Tile Roof Hook



Tile Roof Attachment



13
Item No. ERK-TRH-T09
Description Tile Roof Hook



14
Item No. ERK-TRH-T10
Description Tile Roof Hook



Item No. ERK-TRH-F01
Description Flat Tile Roof Hook



21
Item No. ERK-TRH-F02
Description Flat Tile Roof Hook



15
Item No. ERK-TRH-T11
Description Tile Roof Hook



16
Item No. ERK-TRH-T12
Description Tile Roof Hook



Item No. ERK-TRH-F03
Description Flat Tile Roof Hook



23
Item No. ERK-TRH-F04
Description Flat Tile Roof Hook



17
Item No. ERK-TRH-T13
Description Tile Roof Hook



18
Item No. ERK-TRH-T14
Description Tile Roof Hook



Item No. ERK-TRH-S01
Description Slate Roof Hook



25
Item No. ERK-TRH-S02
Description Slate Roof Hook



19
Item No. ERK-TRH-T15
Description Tile Roof Hook



20
Item No. ERK-TRH-T16
Description Tile Roof Hook



Item No. ERK-TRH-S03
Description Slate Roof Hook



27
Item No. ERK-TRH-S04
Description Slate Roof Hook

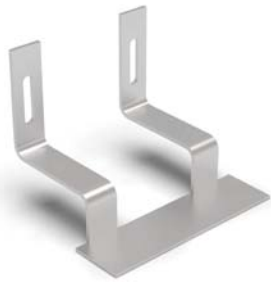


Tile Roof Attachment

29
 Item No. ERK-TRH-T24
 Description Tile Roof Hook



30
 Item No. ERK-TRH-T21
 Description Tile Roof Hook



31
 Item No. ERK-TRH-T19
 Description Tile Roof Hook



32
 Item No. ERK-TRH-T26
 Description Tile Roof Hook



33
 Item No. ERK-TRH-T25
 Description Tile Roof Hook



Tilt Mounting



Enerack adjustable tilt system is used for metal roof concrete roof. Fixed or adjustable angles as 10-15 deg, 15-30 deg and 30-60 degree are for your option to maximize energy production.

All Products pre-assembled before shipment, to make the installation easy and quick. Unique design of inner and outer tube with adjustable joints, makes structure stronger, different from the same type products on the market today, and widely compatible with standing seam clamp.

Technical features:

Product name	Adjustable tilt mounting system
Application	Flat concrete roof, metal roof
Inclination	10-15°, 15-30°, 30-60° or customized
Material	AL 6005-T5, SUS 304, EPDM
Finish	AL 6005-T5 Anodized
Module orientation	Landscape or Portrait

1 Assembly

Item No. | ERK-AFL
Description | Adjustable Front Leg



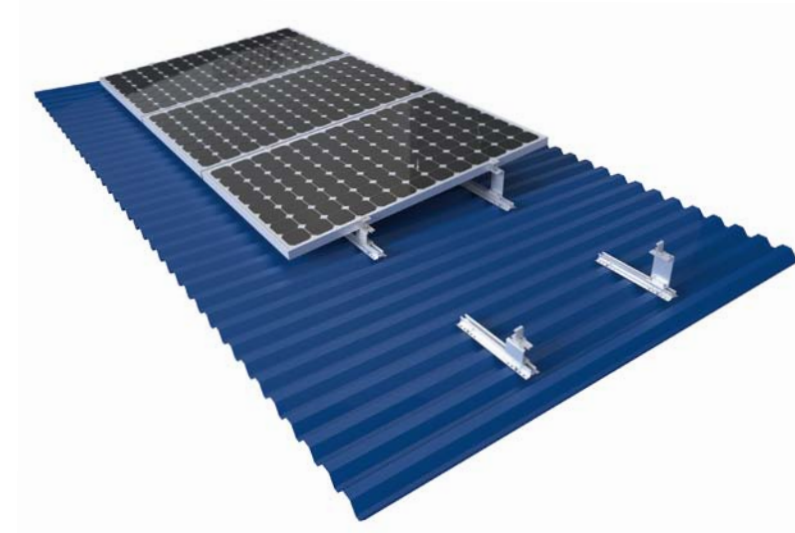
Item No. | ERK-FEC
Description | General End Clamp Kit



Item No. | ERK-EIC
Description | Universal Adjustable (30-40mm) Inner Clamp Kit (Include Spring & Earthing Clip)



Item No. | ERK-ARL-1015
ERK-ARL-1530
ERK-ARL-3060
Description | 10-15° Adjustable Rear Leg
15-30° Adjustable Rear Leg
30-60° Adjustable Rear Leg



Mini Rail with 5 degree support base, lift up the height of the solar panel to achieve cooling conditions, thus maximizing power generation. Simple design, easy to install, with good price.

Technical features:

Product name	Mini Rail Support mounting system
Application	Metal roof
Inclination	5°, 10°
Material	AL 6005-T5, SUS 304
Finish	AL 6005-T5 Anodized
Module orientation	Portrait

Item No. ERK-MFS-5 Description Mini Rail 5° Support Front Leg	Item No. ERK-MRS-5 Description Mini Rail 5° Support Rear Leg	Item No. ERK-MFS-10 Description Mini Rail 10° Support Front Leg
--	---	--



1 Assembly

Item No. | ERK-FEC-BS
Description | General End Clamp Kit



Item No. | ERK-AIC-BS
Description | Universal Adjustable (30-40mm) Inner Clamp Kit



Item No. | ERK-TRB-D10
Description | 26mm Mini Rail for Corrugated or Trapezoidal Sheet Metal



Item No. | ERK-MRS-10
Description | Mini Rail 10° Support Rear Leg



Tilt Mounting



Enerack Tripod system is used for metal roof concrete roof, you can adjust angles as 10-15deg, 15-30deg and 30-60deg options to maximize energy production. All Products pre-assembled before shipment, to make the installation easy and quick for saving your labor cost and time. Customized angle allowed according to customers' need to meet special installation requirements.

Technical features:

Product name	Tripod mounting system
Application	Flat concrete roof, metal roof, open terrain
Inclination	Customized
Material	AL 6005-T5, SUS 304
Finish	AL 6005-T5 Anodized
Module orientation	Landscape or Portrait



1 Assembly

Item No. | ERK-FTP
Description | The Fixing Angle Tripod



Item No. | ERK-ATP
Description | The Adjustable Angle Tripod



Item No. | ERK-R52
Description | Enerack 52mm Rail



Item No. | ERK-EIC
Description | Universal Adjustable (30-40mm) Inner Clamp Kit (Include Spring & Earthing Clip)



Item No. | ERK-FEC
Description | General End Clamp Kit



Enerack Tripod systems have fixed angle and adjustable angle design for options.



1.Fixed Angle Tripod system(ERK-FTP-X): According to customers' need ,we customize different sizes and angles to make a fast, easy and lower cost installation, this is Suitable for installation at known building angle.



2.Adjustable Angel Tripod (ERK-ATP-X): According to the site need to adjust the tripod angle for installation demand. It is suitable for multi-angle installation projects.

2 Assembly

Beam



U Base



32-32 AL Tube



3 Assembly

Beam



U Base



32-32 AL Tube



27-27 AL Tube



Ballasted-PRO Mounting



10 or 15 Degree dual tilt

- Maximal area utilized
- Maximal PV quantity installed
- Enerack E-W 10 or 15 is for solar installed on a flat roof, for maximized roof space utilized, and PV quantity installed.
- All parts are made of extruded aluminum, with stainless steel 304 fasteners
- EPDM foam tape is installed at the bottom of the system, separated the roof and system.
- EPDM foam tape provides better friction, and compensates for the height difference when the roof is uneven.

Technical features:

Product name	E-W 10 or 15
Application	Flat roof
Tilt	10° or 15°
System Material	extruded aluminum profile 6005 T5
Fastener material	Stainelss steel 304
Finish	Anodized
Module orientation	Landscape



1 Assembly

ERK-AIC



ERK-FEC



ERK-BPF-10



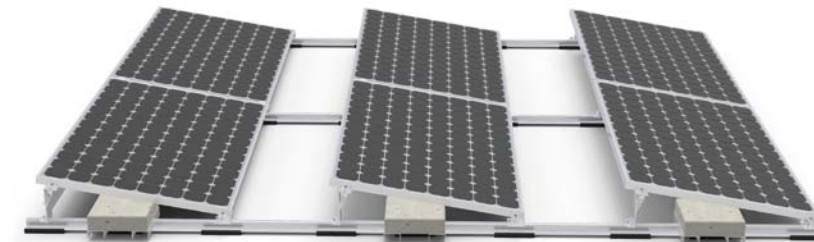
ERK-BPR-10



ERK-BPF15



ERK-BPR15

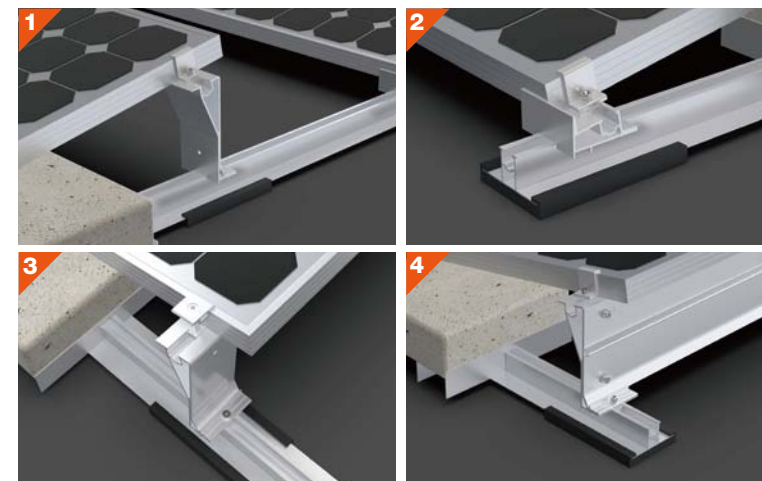


10 or 15 Degree tilt

- Better panel output
- The Enerack S Ballast is for solar PV to be fast and easily installed on a flat roof with 10 or 15 tilt degree inclination. All parts are made of extruded aluminum, with stainless steel 304 fasteners
- EPDM foam tape is installed at the bottom of the system, separated the roof and system.
- EPDM foam tape provides better friction and compensates for the height difference when the roof is uneven.

Technical features:

Product name	S 10 or 15
Application	Flat roof
Tilt	10° or 15°
System Material	extruded aluminum profile 6005 T5
Fastener material	Stainelss steel 304
Finish	Anodized
Module orientation	Landscape

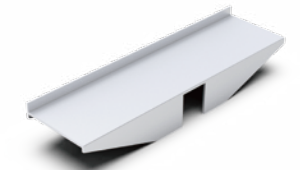


2 Assembly

ERK-R41-02



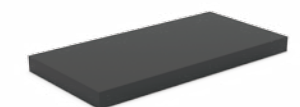
ERK-BST-02



ERK-SFR-04



ERK-EFT-03



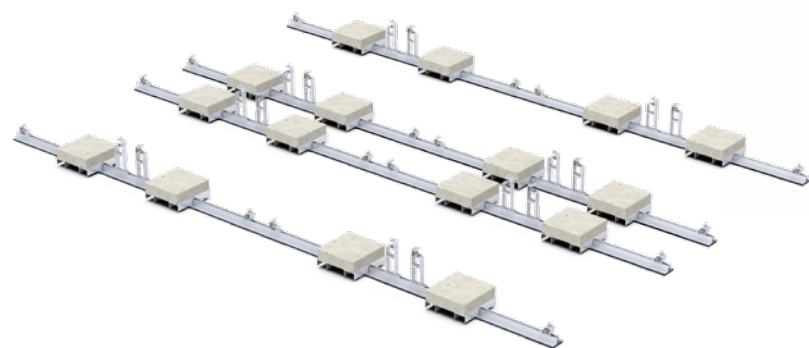
Ballasted-ULT Mounting



Enerack East & West Ballasted-Ult Systems suitable for concrete flat roof and trapezoidal sheet metal roof. Unlike the traditional solar panel fixing method, whose fixing point at the end of the long side of the panel, this series help solar panels to be fixed anywhere on the long side. Therefore, solar panels could withstand greater wind and snow pressure. There is no need to use expansion bolts or chemical bolts on the roof, no damage to roof. The system connects all the panels with the rails into a whole. East-west facing panels have a great effect on resisting wind loads. A combination of high quality aluminium components make a robust, reliable system and quick and easy installation.

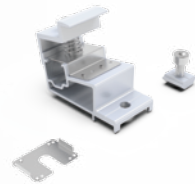
Technical features:

Product name	Ballasted-ULT Series
Application	Concrete flat roof and trapezoidal sheet metal roof
Tilt	10° or 15°
System Material	Extruded aluminum profile 6005 T5, EPDM
Fastener material	Stainless steel 304
Finish	Anodized
Module orientation	Landscape



1 Assembly

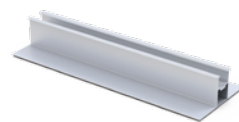
ERK-BUF-10



ERK-BUR-10



ERK-R41-02



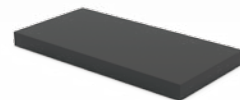
ERK-BST-02



ERK-SFR-04

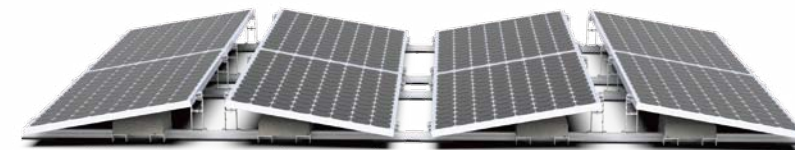


ERK-EFT-03



Product Feature:

Solar panels could withstand greater wind and snow pressure.
 Maximal area utilized.
 Maximal PV quantity installed.
 Maximized roof space utilized, and PV quantity installed.
 Better panel output.
 Solar PV to be fast and easily installed on a flat roof with 10 tilt degree inclination.
 All parts are made of extruded aluminum, with stainless steel 304 fasteners.
 EPDM foam tape is installed at the bottom of the system, separated the roof and system.
 EPDM foam tape provides better friction and compensates for the height difference when the roof is uneven.



East & West 10° for concrete flat roof



South or North 10° for concrete flat roof



South or North 10° for trapezoidal sheet metal roof

2 Assembly

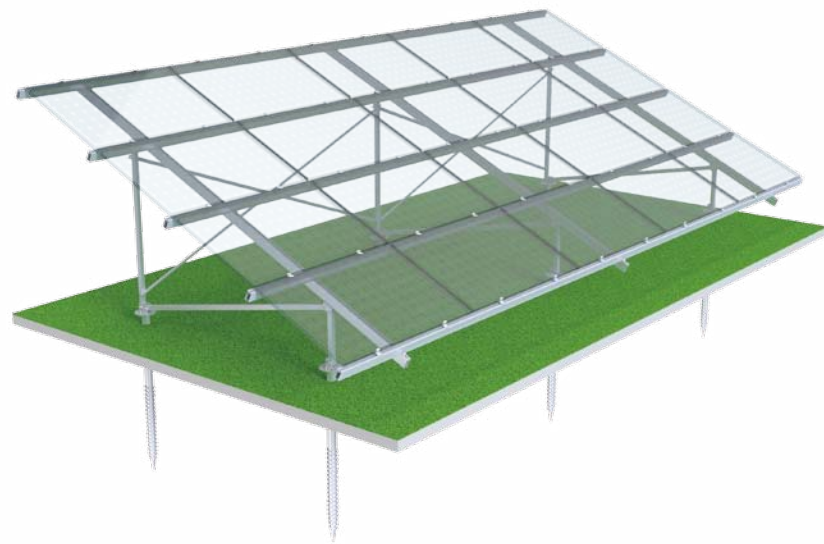
ERK-BUF-15



ERK-BUR-15



Ground Mounting



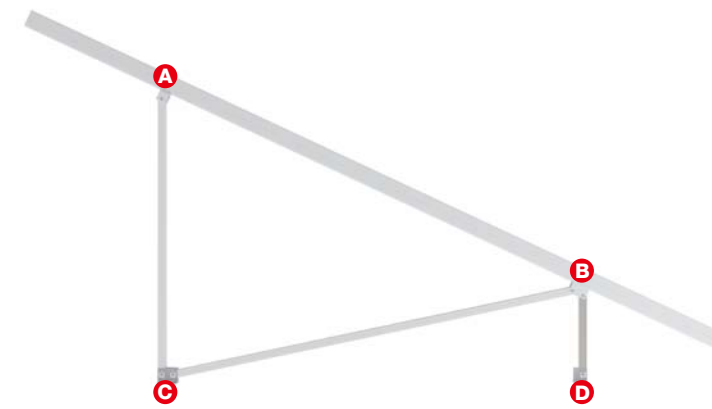
Standard Ground Mounting System

Aluminum ground mount, optimized for lightweight, quick and efficient installation with flexible on engineering upon site conditions. Optional on foundation by ground screw or concrete. Maximize pre-assembled before shipment

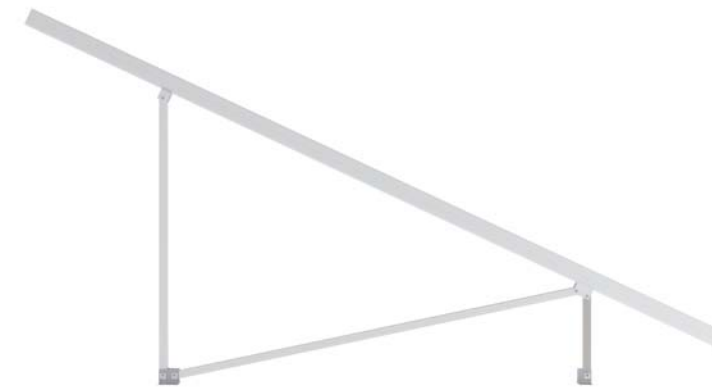
Technical features:

Product name	Standard ground mounting system
Application	Flat concrete roof, open terrain
Inclination	Customized
Material	AL 6005-T5, SUS 304, Q235
Finish	AL 6005-T5 Anodized, Q235 Hot-dip galvanizing
Module orientation	Landscape or Portrait

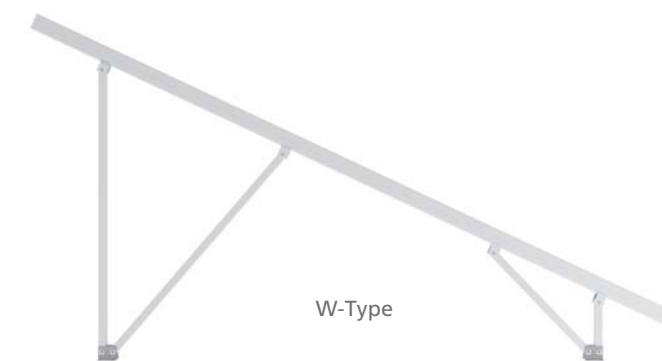
1 Assembly



Ground mounting system has been maximized pre-assembly before shipment, which make the installation more convenient.



N-Type



W-Type

2 Pre-Assembly



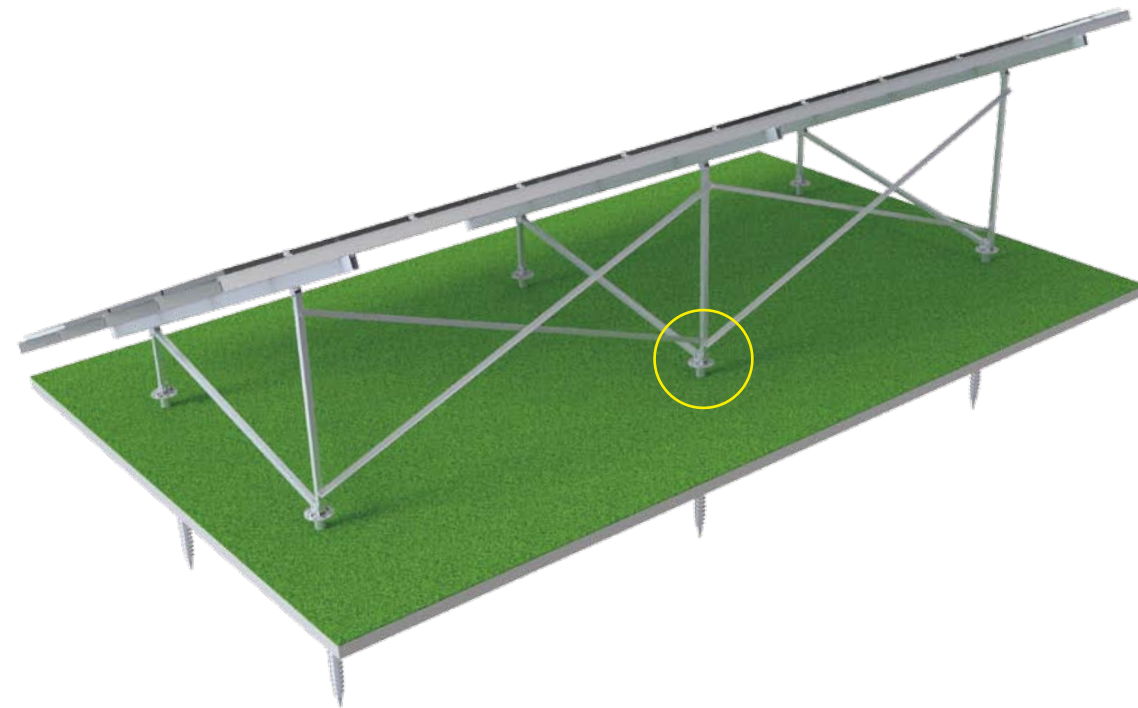
Depending on the different design conditions, pre-assembly support is generally designed into the following two shapes:

The N-Type pre-assembly support is mainly used for the small wind & snow load condition projects.(2-4 columns)

The W-type pre-assembly support is mainly for the 4-5 columns wind & snow load condition projects. We will add cross support to make the structure stronger if the ground height is higher or wind & snow load is larger.

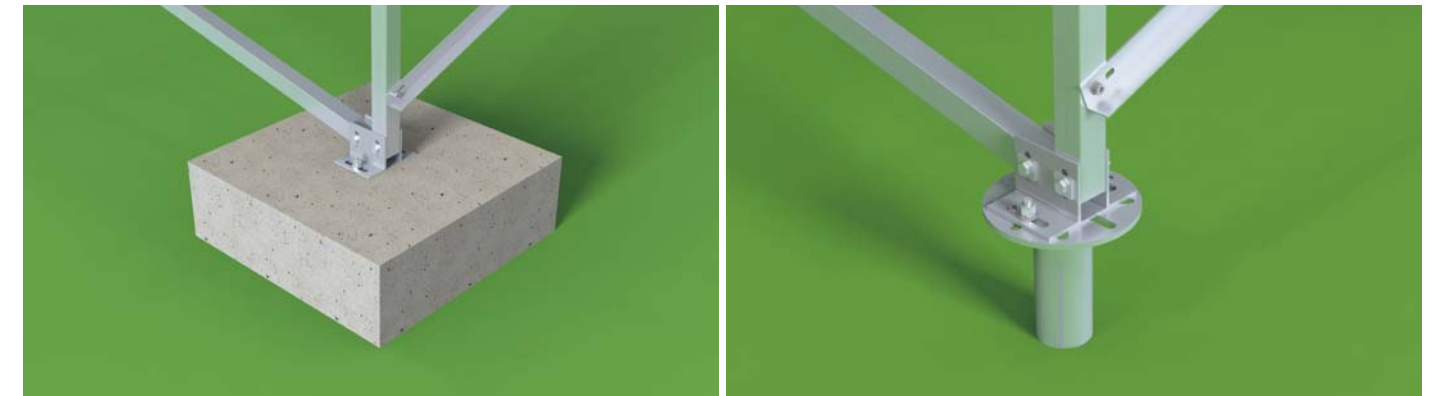
Ground Mounting

3 Cross



4 Foundation

Ground mounting system are commonly used for Concrete Foundation and Screw Foundation.



Concrete Foundation

Screw Foundation

Item	Concrete Foundation	Screw Foundation
Applicable terrain	Flat, Even Tilt, Ladder	
Applicable geology (reference)	Random	SWS3≤N≤10 SWS Test, cohesive soil 3 ≤N≤10
Difficulty Level	Complicated	Easy
Cost	Higher	Lower
Adjustment range	Not convenient to adjust the height of base	Larger
Corrosion resistance	Anti-Corrosion	Hot-dip galvanizing on the surface of the screw foundation, which has met the anti-corrosion requirements of the service life

Conventional pile compression and tensile strength reference values(KN)								
Ground Screw Length	N=3		N=5		N=7		N=10	
	Resistance	compression Resistance	Resistance	compression Resistance	Resistance	compression Resistance	Resistance	compression Resistance
1600	8.7	9.1	14.6	15.2	20.4	21.4	29.2	30.6
1800	9.9	10.2	16.5	17.1	23.1	24	33	34.4
2000	11	11.4	18.4	19	25.8	26.7	36.8	38.2
2200	12.2	12.5	20.3	21	28.4	29.4	40.6	42
2500	13.9	14.2	23.2	23.8	32.4	33.4	46.4	47.8

Remarks: The N value of the soil in this table are based on the Swedish penetration test (SWS).

Ground Mounting



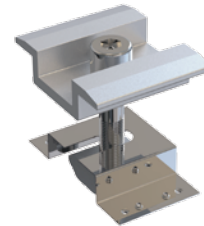
U Pile Ground Mounting System

Enerack U Pile Ground Mounting Systems suitable for large scale power station installation, Pile to the ground makes installation faster and lower cost than others. Each components are Maximize pre-assembled, widely save your labor cost and installation time. Customization allowed according to project wind & snow load, provide economic & effective solutions.



1 Assembly

Mid clamp



Rail



End clamp



Rail fixing clamp



Main structure



The U type Pile Ground Mounting System has been folded into a rectangular shape before shipment. Easy to transport.

Technical features:

Product name	U Pile ground mounting system
Application	Open terrain
Inclination	Customized
Material	AL 6005-T5, SUS 304, Q235
Finish	AL 6005-T5 Anodized, Q235 Hot-dip galvanizing
Module orientation	Landscape or Portrait

Penetration depth	Conventional U pile compression and tensile strength reference values (KN)							
	N=3		N=5		N=7		N=10	
	Resistance	Compression Resistance	Resistance	Compression Resistance	Resistance	Compression Resistance	Resistance	Compression Resistance
1500	9.5	11.5	15.7	19.3	21.9	27	31.13	38.6
1600	10.1	12.3	16.7	20.6	23.3	28.8	3.235	41.2
1700	10.8	13.1	17.8	21.8	24.8	30.6	.337.	43.7
1800	11.4	13.9	18.8	23.1	26.2	32.4	341.4	46.3
2000	12.6	15.4	20.8	25.7	29.1	36	45.65	51.5
2200	13.8	17	22.9	28.3	32	39.6	1.7	56.6
2500	15.7	19.3	26	32.1	36.3	45		64.3

Remarks: The N value of the soil in this table are based on the Swedish penetration test (SWS).

2 Main structure & components

U Pile



Beam



Square tube



Holder

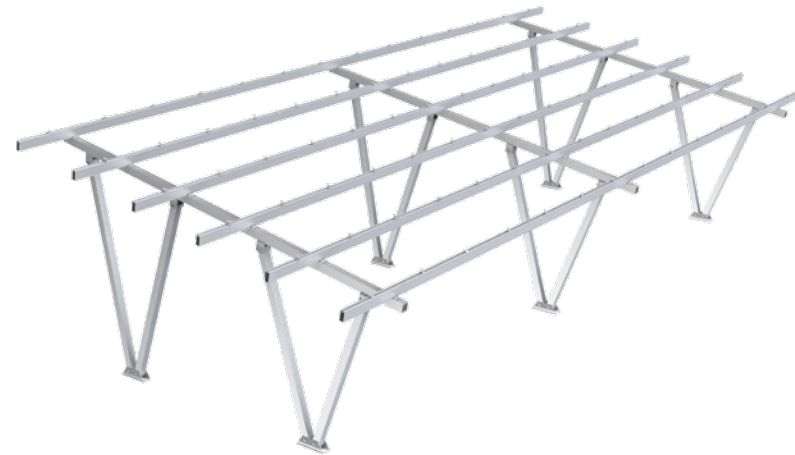


H Support



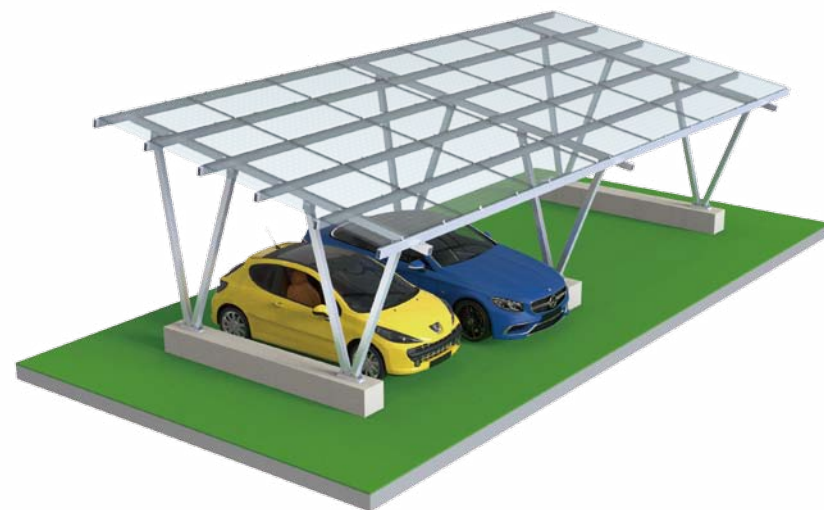
Carport Mounting

1 Structure & components



Carport Mounting System

Enerack Carport Mounting Systems offers a simplified and economical solutions that provides a perfect combination of Shade parking and solar power generation as well as electric vehicle charging. It applied for family parking, commercial parking, awnings and even bus stops.



highly pre-assembled main structure for solar modules landscape or portrait 5°/ 8°/10°inclination or custom customized and engineered to project maximal span up to 5.4m cover up to 2 parking spaces per span.

Technical features:

Product name	Carport mounting system
Application	Solar parking structure
Inclination	5°, 8°, 10° or customized
Material	AL 6005-T5, SUS 304
Finish	AL 6005-T5 Anodized
Module orientation	Landscape

2 Main structure & components



Waterproof Carport System



Our carport systems are sold to Africa, the Middle East, Southeast Asia, Europe and the South America. The idle area of the parking shed is used to build a photovoltaic parking shed, and the combination of photovoltaic power generation and carport is the simplest one in the combination of photovoltaic and building. It can not only achieve all the functions of the traditional carport, but also bring electricity generation benefits to the owner. It is stored in the battery by the charging device or directly supplied to the electric vehicle to charge for self-use. You can even use extra power to get online. Using aluminum alloy structure bracket, simple installation, generous, fashionable, elegant.

Product Overview:

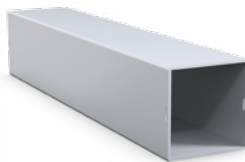
Install Site	Flat outdoor
Material	AL6005-T5, SUS304
Standards	AS/NZ1170.2, JIS C 8955, MCS 012, TUV, UL2703 etc
Tilt Angle	5°, 30°

1 Assembly

ERK-R125



ERK-CPS



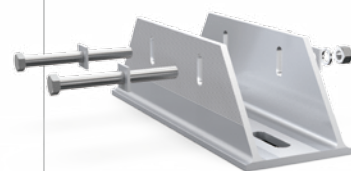
ERK-B110



ERK-CPH-01



ERK-CPS-02



Features:

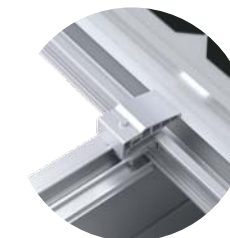
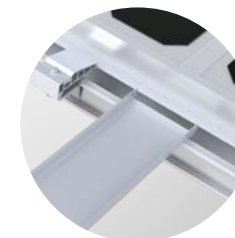
1. Good heat absorption.
2. Good waterproof and rain protection, convenient installation, and flexibility.
3. Make full use of the original site to provide green energy.
4. Suitable for frame panel: Poly modules, double glass module etc.

Installation place: home, company, shopping mall, large parking lot.

Parking category: battery car/bicycle, car, bus.

Number of parking Spaces: 1 parking space, 2 parking Spaces, 3 parking Spaces, multiple parking Spaces (large span).

By row: single row parking space, double row parking space.

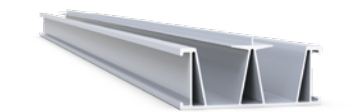


2 Component List

ERK-HWT



ERK-RWT



ERK-GRC



ERK-PVC



Product Catalog Solar Mounting Solutions



WhatsApp



Web



Xiamen Enerack Technology Co., Ltd.

Tel: +86 - 592-5669285

Mail: info@enerack.com

Fax: +86 - 592-5669235

web: www.enerack.com

Add: 203A, NO.6 Huli Avenue, Huli District, Xiamen, China